

MATTAPAN/ GREATER BOSTON TECHNOLOGY JOB TRAINING AND JOB SEARCH CENTER

VISIT WWW.MATTAPANTECH.COM OR ATTEND ONE OF OUR
INFORMATION SESSIONS, HELD EACH FRIDAY, 10AM—12PM.

Upcoming Classes:

MATTAPAN/ GREATER BOSTON TECHNOLOGY LEARNING CENTER, INC.

A Registered 501(c)3 Public Charitable Organization. Established in 2006.

(617) 298-0357

www.mattapantech.org

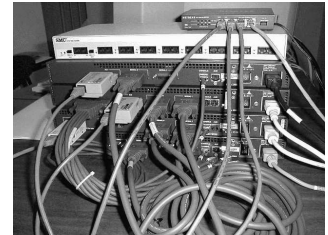
Mattapan/ Greater Boston Technology Learning Center (Mattapan Tech) admits students of any race, color, national origin to all the rights, privileges, programs, and activities generally accorded or made available to students at the school. Mattapan/ Greater Boston Technology Learning Center (Mattapan Tech) does not discriminate on the basis of race, color, national origin, and ethnic origin, in administration of its education policies, admission policies, scholarship programs, and athletic and other school administered programs.

IT Specialist Program - This class prepares A+ PC Repair and Network+ technicians with a combination of lectures and hands-on practice. Students are expected to learn how to build, troubleshoot and repair computer systems, and how to design, implement and troubleshoot local and wide area networks. 95% of our graduates pass their CompTIA A+ and Network+ certification exams the first time. Students meet each Saturday for 16 weeks. Hands-on practice hours begin upon registration.

Weekend Class Begins:

Saturday, March 9, 2013 from 9:30am - 3:30pm

\$350 Registration Fee and \$70 Lab & Book Usage Fee



***Register for Computer Network Specialist/ Network+ only: Class begins on Saturday, March 9, 2013 from 9:30am—12pm. \$300 Registration Fee and \$40 for Lab & Book Usage Fee**

Limited \$50 - \$100 scholarships available through the United Christian Fellowship Urban Ministries for those who qualify. Visit www.mattapantech.com for more information.

PC Repair/ Computer Systems Specialist Program - This course prepares students to become A+ PC Repair technicians. In this class, students learn how to build computer systems and to troubleshoot and repair PCs, laptops and tablets. Students meet once a week for lecture and in addition, are required to complete a minimum of 32 hands-on practice hours. Hands-on practice hours begin upon registration.

Morning Class Begins:

**** Mon., Feb. 25, 2013
from 9:30AM — 12PM***

Evening Class Begins:

**** Thurs., Feb. 28, 2013
from 5:30pm - 8pm***

Weekend Class Begins:

****Sat., Mar. 16, 2013
from 1:00PM — 3:30pm***

Registration Fee: \$150
Lab & Book Usage Fee: \$35



Beyond Theory . . . Hands-on Training